



グループ別発表 2
発表 2

「Scan Shoei Yoh Works」

井上 朝雄

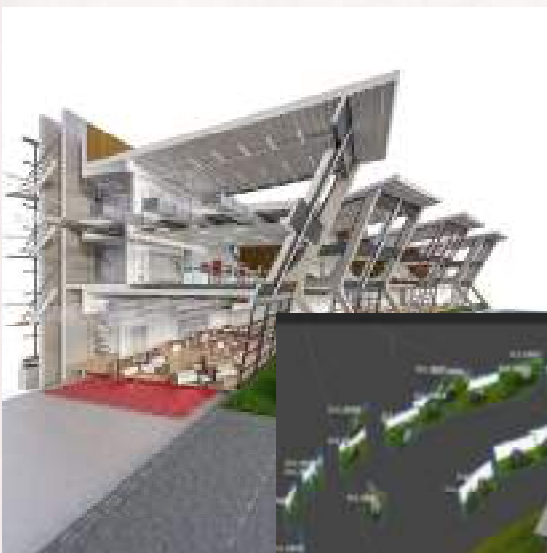
九州大学
大学院芸術工学研究院/
Q-AOS 都市クラスター
准教授

Scan the Shoeni Yoh works

Tomo INOUE
Associate Professor
Kyushu University

How to archive in digital?

BIM

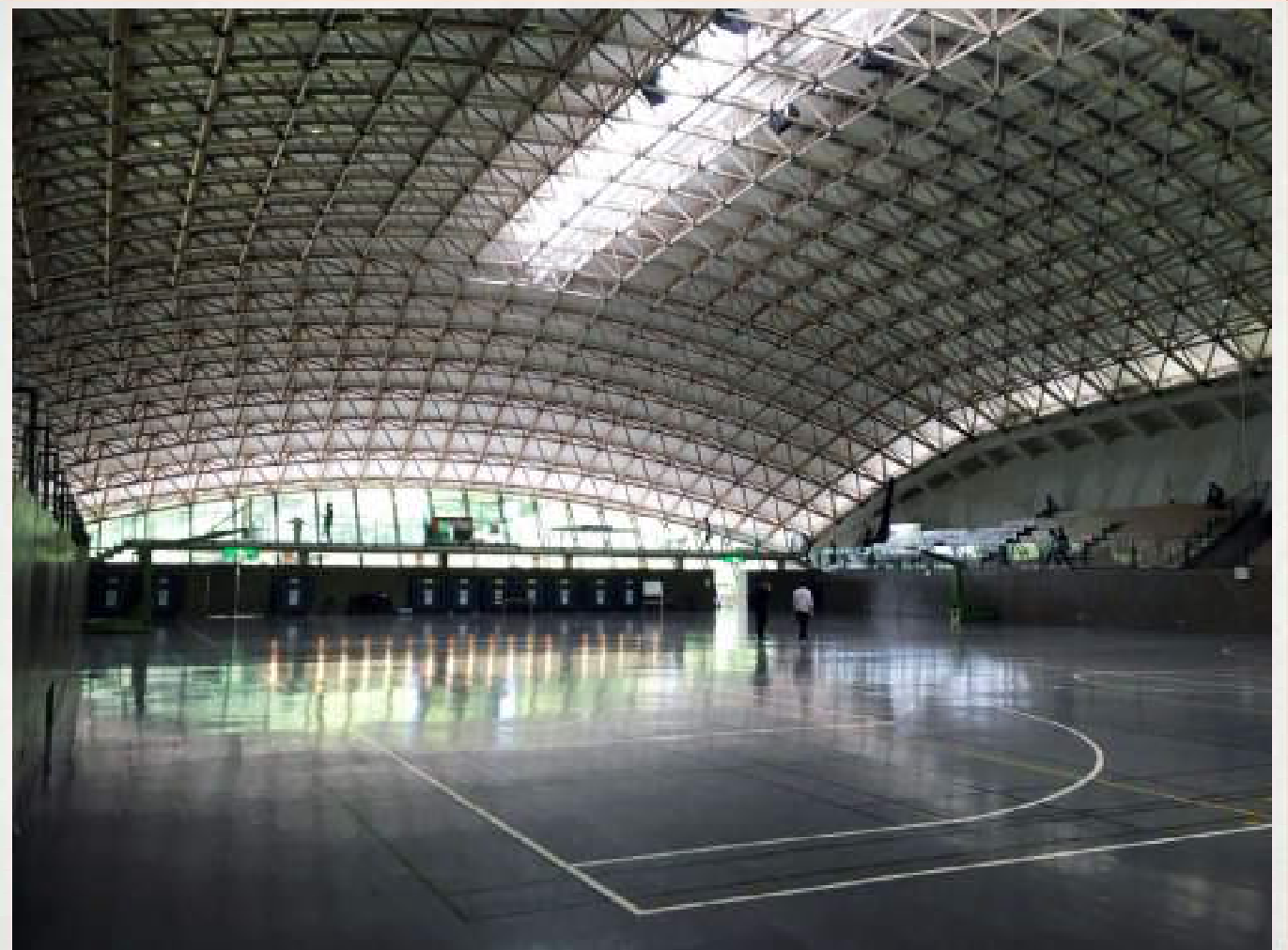


Photogrammetry

3D Laser Scanner



Oguni Dome, 1988, Kumamoto



METHOD

- Scan a building on site using a 3D laser scanner to obtain point cloud data.
- The roof cannot be covered by a scanner, so take a video using a drone from a high viewpoint, and point cloud data is obtained from the video by photogrammetry.



Combining the obtained data.

【Equipment】

3D laser scanner Z+F IMAGER5016

Drone dji Mavic air



【Software】

3D laser scanner : Z+F Laser Control Scout

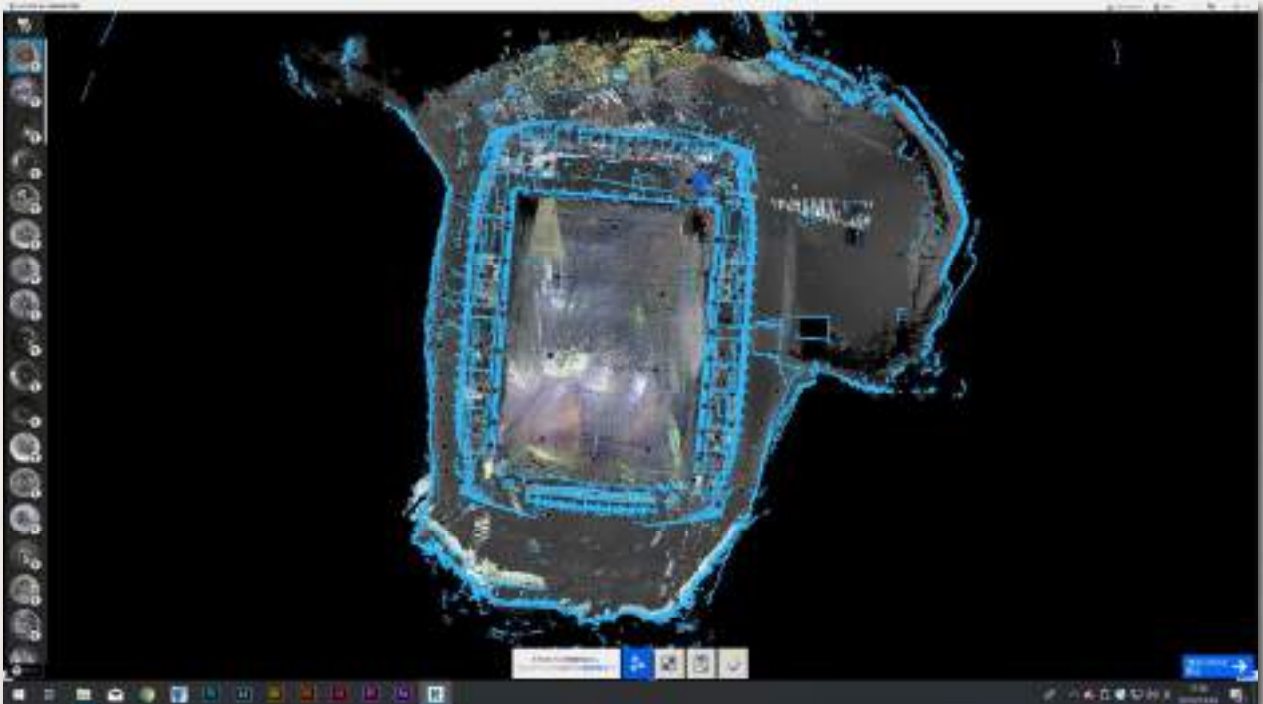
Point cloud data : Autodesk Recap

Photogrammetry : 3DF Zephyr, Reality capture

SURVEY

2 days (24-25.Sep.2019) Scanned by 3D laser scan and took movie by drone.

Scanned points : 105points

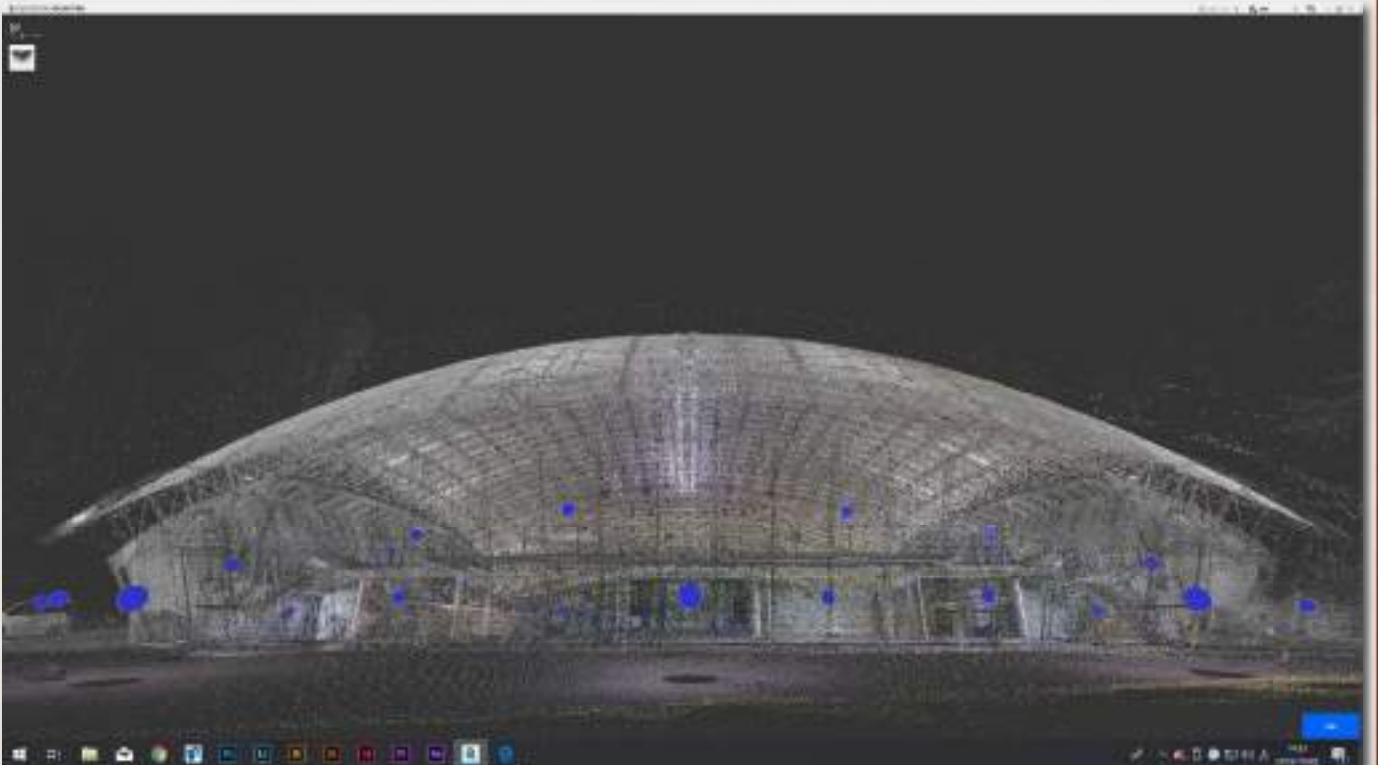


POINT CLOUD DATA

3D LASER SCAN



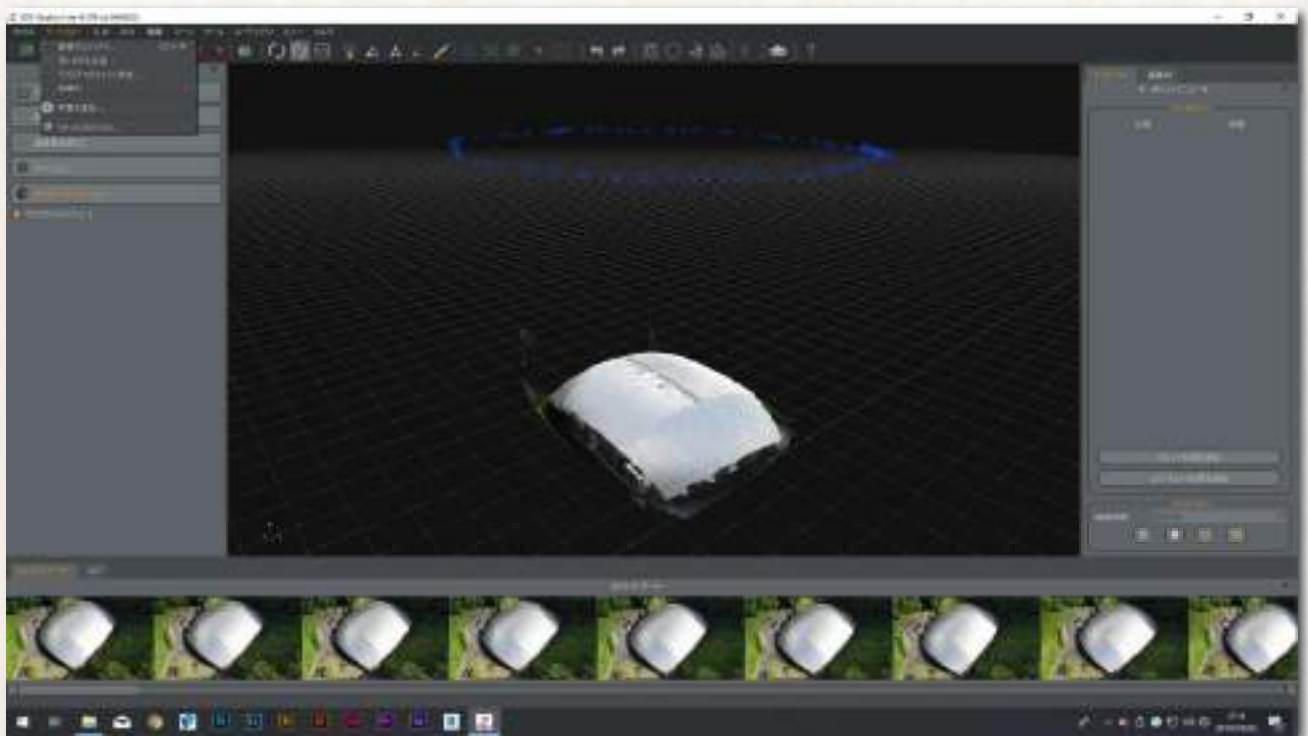
Set the 3D laser scanner on the blue dots

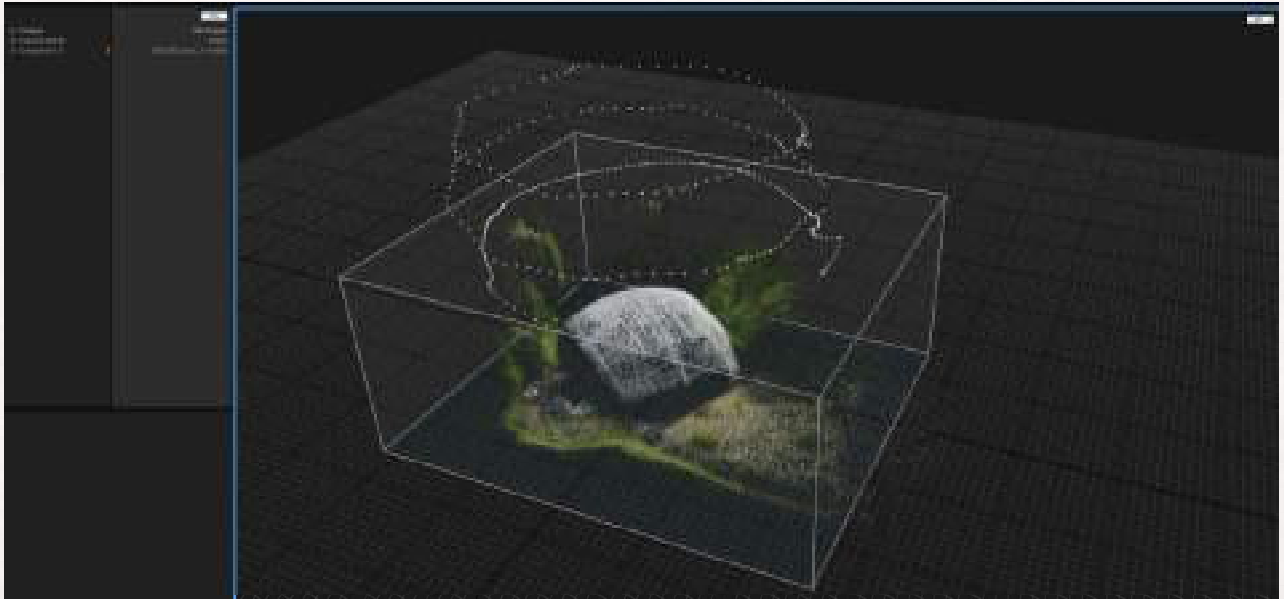




MODELING DATA

PHOTOGRAMMETRY





Oguni Dome

<https://skfb.ly/o6RPI>



<https://v.gd/mU4MzC>

The Shoel Yoh Archives

Activities for "the Shoel Yoh Archives" started in February 2019, when the drawings, documents, models, products and collection of works from architect Shoel Yoh were deposited at the Environmental Design Institute (aka [iodo.jp](http://www.iodo.jp/)) Faculty of Design, Kyushu University. The Yoh Design Office was established in 1970 in Fukuoka, Japan. Since then, Mr. Yoh has been actively engaged in a wide range of design activities that include architecture, interior design and product design, and has received high regards both in Japan and abroad. The collection of materials showing the various phases of his work from conception to implementation is extremely important from the perspective of design, architecture, technology and art, and will be useful for future research and educational activities.

The Naiju Community Center

The Naiju Community Center in Itaska City is one of the masterpieces of the world-renowned architect Shoel Yoh. It is a community center built in 1964 in Chikuhō Town, Kato County, Fukuoka Prefecture (at that time). The complex curved concrete roof was created by weaving bamboo, a local material in Kyushu, and using it as a formwork for casting concrete. The weaving of the bamboo was done in collaboration with local residents. This design and construction process was highly evaluated as being promising even from the global perspective by American Architect Greg Lynn, who is also a leading expert in computational design. As a concrete shell structure using bamboo formwork, it has an important position in the history of architectural technology. It is a cultural heritage that Kyushu is proud of, and there is a good chance that it will be designated as an important cultural property of Japan in the future.

VR Exhibition

Click on the URL below to jump to the Matterport site.

<https://mattersport.com/3d-tour/2020/06/01/01/>

VR Exhibition Intro Site
<https://v.gd/mU4MzC>

Sketchfab
Naiju Community Center
<https://skfb.ly/o6Klr>

VR Exhibition Matterport
<https://v.gd/oZDrIn>

Oguni Dome
<https://skfb.ly/o6RPI>

Shoel Yoh Archives Report
<https://v.gd/oXiGgU>

Music Atelier
<https://skfb.ly/o6RQH>